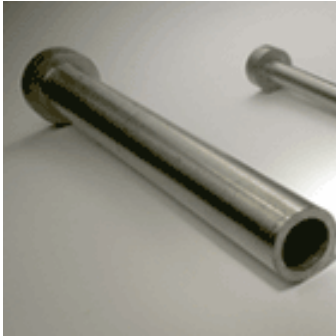
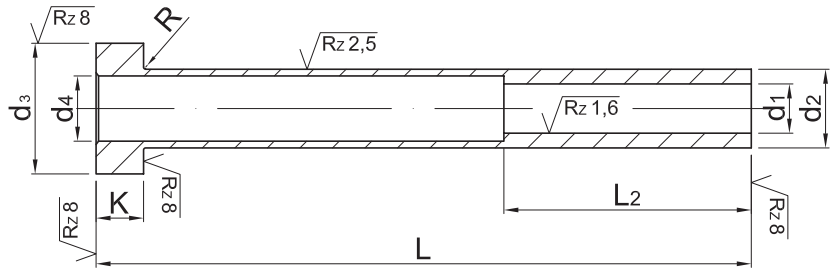




# INYECCION

EXPULSOR TUBULAR  
 TEMPLADO DIN 16.756  
 (CODIGO CANN / T)



## ► CARACTERÍSTICAS

**Código Solicitud:**

CANN / T (d1xd2xL)

**Acero:** WS

**Dureza**

**Cuerpo:** 60/62 HRC

**Cabeza:** 45 ± 5 HRC

**Ejecución:**

Templado - Rectificado

Cabeza recalcada en caliente

d1 H5	d2 g6	d4	d3 0 -0.2	K 0 -0.05	R +0.2 0	l2 +2 0	L <sub>-</sub> -0/+1										
							75	100	125	150	175	200	225	250			
1.5	3	2	6	3	0.3	35	●	●	●	●							
1.6							●	●	●	●							
2	4	2.4	8				●	●	●	●	●	●	●	●			
2.2		2.6					●	●	●	●	●	●	●	●			
2.5	5	2.9	10				●	●	●	●	●	●	●	●			
2.7		3					●	●	●	●	●	●	●	●			
3		3.4					●	●	●	●	●	●	●	●			
3.2		3.6					●	●	●	●	●	●	●	●			
3.5	6	3.9	12				5	0.5	45	●	●	●	●	●	●	●	●
3.7		4								●	●	●	●	●	●	●	●
4	4.4	●	●	●	●	●				●	●	●	●				
4.2	8	4.6	14	●	●	●				●	●	●	●	●			
5		5.4		●	●	●				●	●	●	●	●			
5.2	5.6	●	●	●	●	●				●	●	●	●				
6	10	6.4	16	7	0.7	45				●	●	●	●	●	●	●	●
6.2		6.6								●	●	●	●	●	●	●	●
8	12	8.4	20							●	●	●	●	●	●	●	●
8.2		8.6								●	●	●	●	●	●	●	●
10	14	10.4	22				●	●	●	●	●	●	●	●			
12		12.4					●	●	●	●	●	●	●	●			

